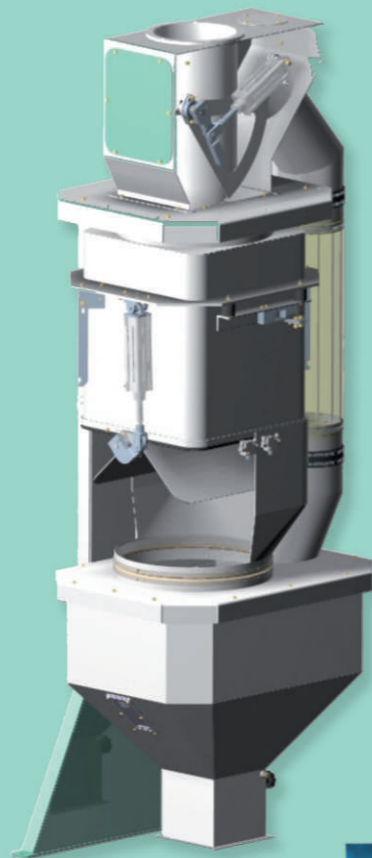


We keep your mills running!



M E S M A
T R A D I N G

Automatic Single Hopper Scale Type PES



MESMA TRADING AG • P.O. Box 662 • CH-4153 Reinach BL 1 • Switzerland
Phone +41 61 712 19 19 • Fax +41 61 713 80 16 • www.mesmatrading.com

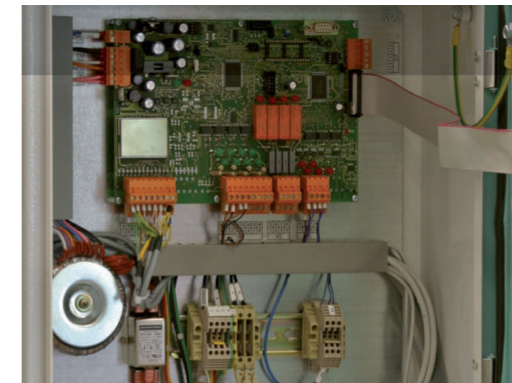
Characteristics of the Automatic Single Hopper Scale Type PES

Easy & quick calibration



Calibration and periodical check can be easily and quickly executed by placing standard weights to the arms hinged on weighing hopper. Commands given through the operator panel allow to perfectly readjust the machine obtaining the required accuracy for effective control of plant yield.

Electronics control



Developed with the latest technology in electronics components, it is fully integrated and easily accessible for maintenance and wiring. The weight measurement is done through top performance A/D converter used in the weighing systems. Input and output are protected from any wiring error and from electromagnetic noises, making these instruments really industrial.

Field bus



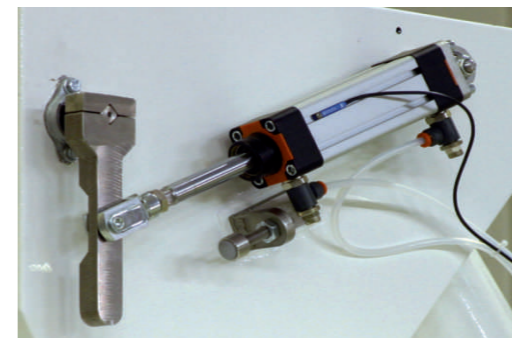
In the age of communication systems we cannot ignore this nowadays fundamental aspect. Three communication field busses are available: Profibus DP / Modbus / TTY (current loop). PES scales are perfectly integrated in new automation systems and in existing ones, allowing the replacement of existing flow control systems.

User control panel



Use of touch-screen display make the operator interface extremely logical and user-friendly. Few and simple pressures on virtual buttons permit setting of main working parameters and detecting possible alarms. The head page reports evidently the decisive flow rate, net hopper weight and basic using indications.

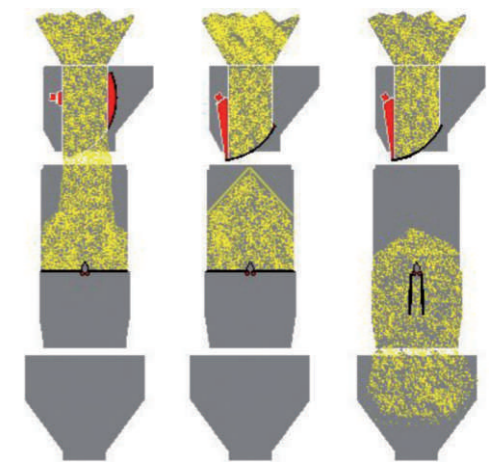
Safety



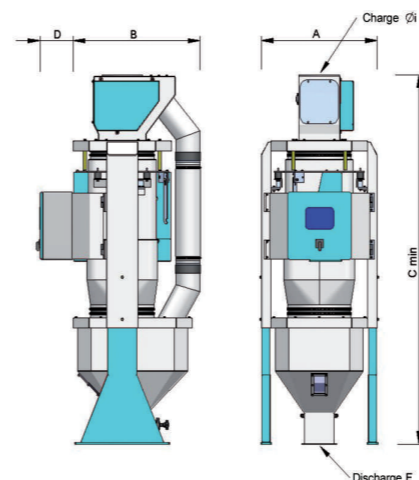
The weighing unit has been developed according to safety and sanitation requirements. Wiring, electric panel and the electronic components have been designed to pass any standard tests. On request a version of PES according to ATEX standards for use in area 22, certified by German TÜV, is available.

Working principle

The automatic hopper scale PES works either as control unit or as dosing unit without any modification to the mechanical parts. After the phase of filling, attained the set value, the inlet gate closes and net weight contained is measured. Subsequently the phase of discharge follows immediately if used as control unit or timed, according to effective hopper amount, if used as dosing unit.



Technical data



	PES 5	PES 12	PES 25
A	618	730	810
B	675	800	970
C min	1'750	2'190	2'515
C max	2'200	2'640	2'965
D	210	210	210
øi	130	200	250
E	150x150	180x180	220x220
Flow rate P.S. 750 kg/m ³	5T/h	12T/h	25T/h
Flow rate P.S. 550 kg/m ³	3,5T/h	9T/h	18T/h
Flow rate Byproduct	2,5T/h	6T/h	12T/h

Contact

MESMA TRADING AG
P.O.Box 662
CH-4153 Reinach 1
Switzerland
Phone +41 61 712 19 19
Fax +41 61 713 80 16
info@mesmatrading.ch
www.mesmatrading.com

